

MANTERO | 1902
SPRING/SUMMER 2025

t h e l o u n g e

Welcome to The Lounge collection, where comfort seamlessly blends with sensuality, creating a world of relaxed and sophisticated elegance. **The Lounge Mantero 1902** is a summer collection that evokes the tranquility of a resort chill-out moment, an afternoon at an exclusive tennis club of a Grand Hotel, or an evening at the rooftop bar of a traditional Moroccan Riad.

For the **Spring-Summer 2025** collection, Mantero 1902 revisits its essence with the floral print, crafting a realm of soft, fluid, and refined garments.

Loungewear everywhere features prints inspired by designs from the archive reinterpreted with a contemporary twist. The collection's graphic appeal is highlighted by a 1980s poppy design, presented in both a two-tone print and a **plain crêpe satin jacquard fabric**, enhancing the collection's elegant aesthetic. The colour palette embraces soothing tones such as pink, cobalt blue, and yellow, artfully combined with classic black and white for a sophisticated look.

From the relaxing dimension of loungewear, the SS25 collection embraces a **Tennis Club** inspiration, capturing the sporty luxury vibe. The colour palette features vivid and bright colours like orange and light blue, complemented by whimsical touches of red — a shade dedicated to the exclusive **figurative print** for SS25, echoing the classic clay tennis courts. The icon floral design n. 59 is reimagined with the charm and elegance of an English garden, evoking its beauty and grace.

The **Modern Nomad** world stands out with exotic charm, featuring prints such as boteh, Moroccan, and mosaic-inspired motifs, all enhanced by **earthy and natural colours**: ochre, olive green, warm yellows, ivory white, and an alluring cobalt blue. The drawstring dress is the iconic garment of this style dedicated to the spirit of travel and is made hyper-chic with silk habotai and silk pékin lurex. The tribal-esque prints also enrich blazer and trouser ensembles, perfectly combining with a contemporary toile de jouy design.

The collection features **versatile, comfortable, and effortlessly sophisticated** pieces. Utilizing expertly chosen **fabrics** such as silk pékin lurex for a touch of shine, and habotai to keep summer dresses fresh, Mantero 1902 seamlessly blends classic silk twill and crêpe for an elegant finish. Introducing jacquard-designed plain fabrics adds a fresh look to the brand's style.

The **colour palette** — olive, light blue, and orange — complements the line, allowing for essential combinations that highlight the brand's distinctive prints. Furthermore, the collection places a strong **emphasis on weaving**, a skill at the heart of Mantero's heritage.

Denim remains a staple, now offered in a lighter version that retains the classic stonewash effect. The **knitwear** collection expands with a summer cardigan, a tennis-style skirt and polo shirt combo. **Special accessories** complete the look, featuring a variety of options from tie-like bandeau with embroidered details, bandana triangle with fringes and lozenges-shaped scarf with a wrinkled effect. The Mantero 1902 **best seller**, the pareo skirt and top combo, is refreshed with new prints in silk twill and, for the first time, in crêpe satin jacquard with lurex fringes appliqué. Among the **timeless classics**, crêpe, twill, and habotai scarves adorned with the collection's prints add the iconic touch of the brand.

Mantero 1902's strength lies in its uniqueness, highlighted by its **signature prints**, scarves, and a rich variety of colours that define its collections. Rooted in traditional craftsmanship and classic accessories, the brand evolves to embrace **contemporary trends**.

Beginning with SS25, the fabrics* offered in the collection are largely certified according to the **Global Organic Textile Standard (GOTS)**, highlighting Mantero's ongoing commitment to present excellent quality products to the market that adhere to **ethical and sustainable standards** — values central to the company's philosophy and valued by attentive and conscientious customers.

* The garments will have a tag attached to the pendant indicating that they are made with certified fabrics.

INDEX

MOD	ART	STYLE	SIZE	DESCRIPTION	PAGE
0485F	0630I	44195	67x67	MATCH POINT	6
0485F	0014G	43829	67x67	ROLAND GARROS	7
0475F	0023G	42977	67x67	MARRAKECH	8
0484F	0051G	37070	67x67	ALHAMBRA	9
0489F	0023G	43362	90x90	ARCHIVIO N.58 COQUELICOT PARFUMÉ	10
0156F	0030G	43349	90x90	ARCHIVIO N.59 FLOWERS GRAND SLAM	11
0156F	0030G	43482	90x90	MANTERO 1902 TENNIS CLUB	12
0156F	0057G	44358	90x90	LA PALMERAIE	13
0645F	0023G	44160	LOZENGE-SHAPED SCARF 69x200	WIMBLEDON	14
0491F	23475	38932	140x140	EXOTIC PAISLEY	15
0652F	0630I	44184	135x200	LA MAMOUNIA	16
0644F	0630I	44101	LOZENGE-SHAPED SCARF 27x135	MAROCAINE	18
0638F	0014G	44009	BANDEAU 5/2x179	FLORA MEDITERRANEA	19
0643F	0023G	43997	BANDANA TRIANGLE 68x68x96	BOTEH TROIS COTES	20
0642F	0023G	43948	BANDEAU 16x130	MUGUET	21
0622F	0030G	00845	TOP	ERITA	22
0622F	0226G	00839	TOP	ERITA	23
0186F	0014G	00840	PAREO SKIRT	DOROTHY	24
0630F	0226G	00841	PAREO SKIRT	DOROTHY	25
0125A	27983	0830C	SHORT SLEEVED SHIRT	CORA	32
0125A	27983	0832C	SHORT SLEEVED SHIRT	CORA	
0125A	27989	0831C	SHORT SLEEVED SHIRT	CORA	
0125A	27989	0833C	SHORT SLEEVED SHIRT	CORA	
0075A	27989	0830F	CROPPED SHIRT	IDA	34
0075A	27989	0831F	CROPPED SHIRT	IDA	
0111A	0630I	0830H	LOOSE SHIRT	HALEY	36
0112A	0630I	0831H	LOOSE SHIRT	HALEY	
0112A	0630I	0832H	LOOSE SHIRT	HALEY	
0112A	0630I	0833H	LOOSE SHIRT	HALEY	
0063A	0226G	0830W	VERSATILE SHIRT	BONNIE	38
0063A	27983	0831W	VERSATILE SHIRT	BONNIE	40
0126A	27983	0832W	VERSATILE SHIRT	BONNIE	
0054A	27983	0833W	VERSATILE SHIRT	BONNIE	
0109A	0630I	0830E	DRAWSTRING BLOUSE	LOLITA	42
0109A	0630I	0832E	DRAWSTRING BLOUSE	LOLITA	
0110A	0630I	0834E	DRAWSTRING BLOUSE	LOLITA	
0110A	24764	0831E	DRAWSTRING BLOUSE	LOLITA	
0110A	24764	0833E	DRAWSTRING BLOUSE	LOLITA	
0139A	OPOLO	00838	KNIT POLO SHIRT	VICTORIA	44
0141A	OGONN	00837	KNIT MINI SKIRT	MARINA	46
0140A	JACQD	00836	KNIT CARDIGAN	CLAUDE	48

INDEX

MOD	ART	STYLE	SIZE	DESCRIPTION	PAGE
0128A	0226G	0830L	LONG DRESS	MARLENE	50
0128A	0630I	0831L	LONG DRESS	MARLENE	
0128A	0630I	0832L	LONG DRESS	MARLENE	
0128A	0630I	0833L	LONG DRESS	MARLENE	
0115A	0014G	0832M	RAGLAN MIDI DRESS	NADIA	52
0116A	0014G	0830M	RAGLAN MIDI DRESS	NADIA	
0116A	0014G	0831M	RAGLAN MIDI DRESS	NADIA	
0116A	0226G	0833M	RAGLAN MIDI DRESS	NADIA	
0113A	0630I	0830K	DRAWSTRING DRESS	LOLA	54
0113A	0630I	0831K	DRAWSTRING DRESS	LOLA	
0114A	24764	0832K	DRAWSTRING DRESS	LOLA	
0114A	24764	0833K	DRAWSTRING DRESS	LOLA	
0123A	27989	0830A	CHEMISIER	MARILYN	56
0123A	27989	0831A	CHEMISIER	MARILYN	
0123A	27989	0832A	CHEMISIER	MARILYN	
0123A	27990	0834A	CHEMISIER	MARILYN	
0124A	27983	0833A	CHEMISIER	MARILYN	58
0084A	JEANS	00850	FIVE POCKETS WIDE LEG JEANS	MARGHE	60
0120A	0014G	0830G	A LINE SKIRT	MICHELA	62
0120A	0014G	0831G	A LINE SKIRT	MICHELA	
0120A	0014G	0832G	A LINE SKIRT	MICHELA	
0120A	0014G	0833G	A LINE SKIRT	MICHELA	
0120A	0014G	0835G	A LINE SKIRT	MICHELA	64
0120A	0226G	0834G	A LINE SKIRT	MICHELA	
0119A	0014G	0830D	STRAIGHT PANTS	DORIS	66
0119A	0014G	0831D	STRAIGHT PANTS	DORIS	
0119A	0014G	0832D	STRAIGHT PANTS	DORIS	
0119A	0014G	0833D	STRAIGHT PANTS	DORIS	
0119A	0226G	0834D	STRAIGHT PANTS	DORIS	68
0121A	0226G	0830P	WIDE LEG TROUSERS	ALICE	70
0122A	27989	0831P	WIDE LEG TROUSERS	ALICE	
0122A	27989	0833P	WIDE LEG TROUSERS	ALICE	
0117A	27982	0831B	DOUBLE-BREASTED BLAZER	ISABELLA	72
0117A	27983	0830B	DOUBLE-BREASTED BLAZER	ISABELLA	
0117A	27989	0832B	DOUBLE-BREASTED BLAZER	ISABELLA	
0118A	27989	0833B	DOUBLE-BREASTED BLAZER	ISABELLA	
0127A	27983	0830Z	LIGHTWEIGHT BOMBER JACKET	ARIELE	74
0129A	27983	0831Z	LIGHTWEIGHT BOMBER JACKET	ARIELE	
0129A	27983	0832Z	LIGHTWEIGHT BOMBER JACKET	ARIELE	
0137A	0226G	0830S	DUSTER COAT	PATTI	76
0138A	27982	0831S	DUSTER COAT	PATTI	

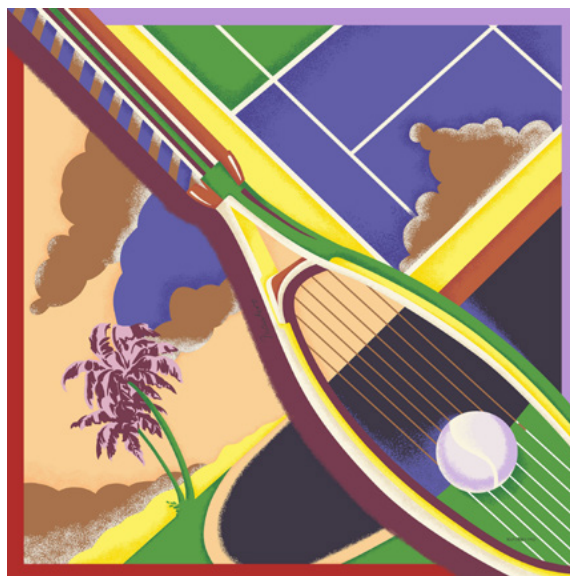
SMALL CARRÉ MATCH POINT

67x67 - 100% SILK HABOTAI | 8 MM - HAND-MADE BABY FRINGES
Model: 0485F - Article: 06301 - Style: 44195

An evocative fusion of graphic lines paints an imaginary tennis court, where the energy of the game is tangible. In the foreground, a racket stands ready to strike the decisive blow to close out the set. A dynamic and vibrant choreography captures the essence of movement on the canvas of this habotai scarf.



Colour: 00001
Colour description: FUCHSIA



Colour: 00002
Colour description: BLUE



Colour: 00003
Colour description: LIGHT BLUE



Colour: 00004
Colour description: BEIGE

SMALL CARRÉ ROLAND GARROS

67x67 - 100% SILK TWILL | 14 MM - HAND-MADE BABY FRINGES
Model: 0485F - Article: 0014G - Style: 43829

An archive drawing from the 1930s is translated into an exquisite geometric and abstract ensemble, where a close look reveals the dynamism of a tennis ball dancing among the shapes.



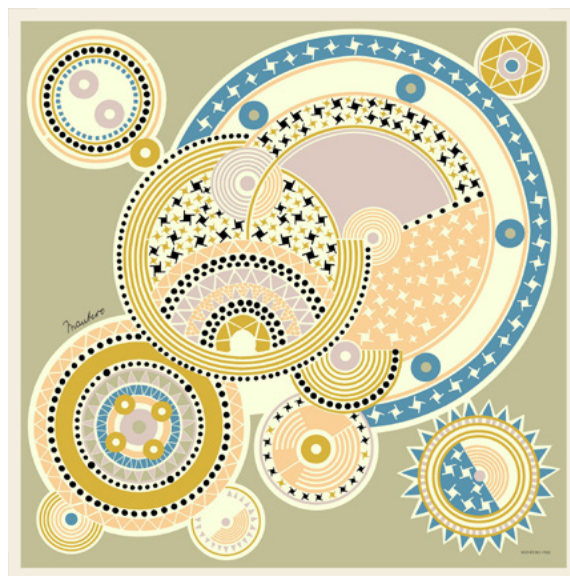
Colour: 00001
Colour description: IVORY



Colour: 00002
Colour description: PINK



Colour: 00003
Colour description: BLUE

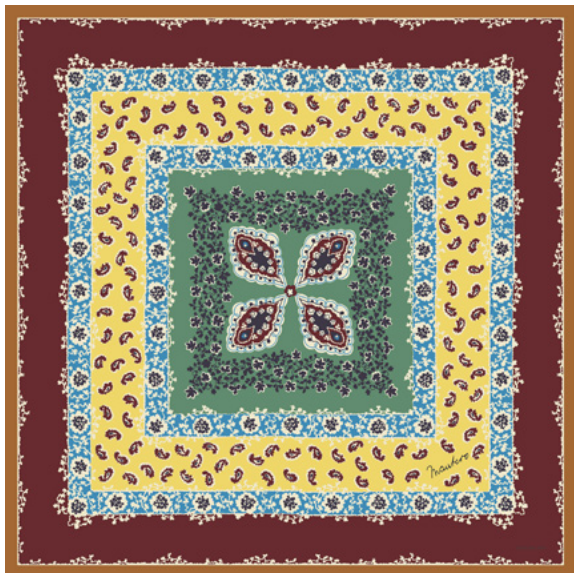


Colour: 00004
Colour description: LIGHT GREEN

SMALL CARRÉ MARRAKECH

67x67 - 100% SILK CRÊPE DE CHINE | 14 MM - DEMI AJOUR-HEM
Model: 0475F - Article: 0023G - Style: 42977

A print that blends traditional boteh motifs in harmony with sophisticated geometric designs and delicate floral patterns, forging a caledisocopic motif that, rising from the core, comes to life with vibrant colours and intricate details.



Colour: 00001
Colour description: GREEN



Colour: 00002
Colour description: APRICOT



Colour: 00003
Colour description: PINK

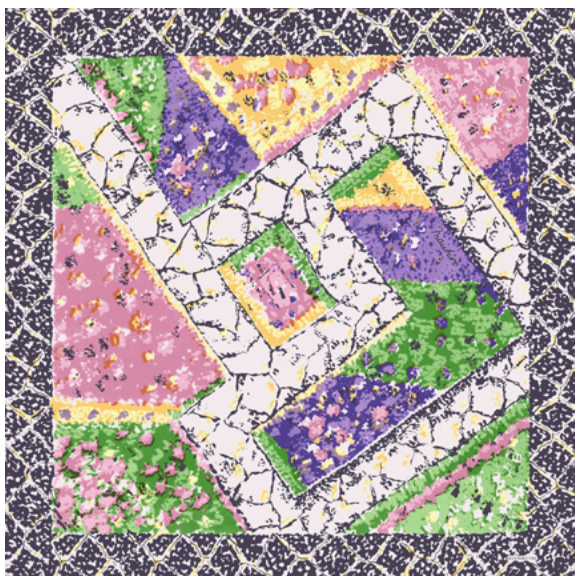


Colour: 00004
Colour description: BEIGE

SMALL CARRÉ ALHAMBRA

67x67 - 100% SILK TWILL - HEAVY | 20 MM - HAND-ROLLED HEM
Model: 0484F - Article: 0051G - Style: 37070

A fascinating tale inspired by the mosaics of the Alhambra. Intricate geometric patterns and subtle details create an immersive visual experience. Beauty and complexity of Moorish details add a unique touch of sophistication.



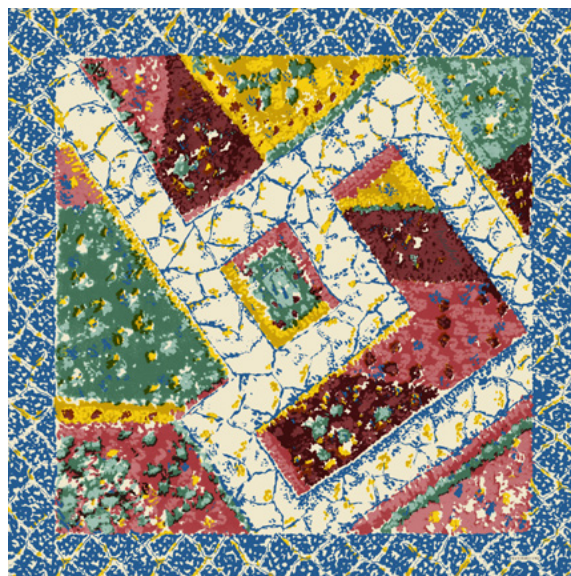
Colour: 00001
Colour description: NAVY



Colour: 00002
Colour description: RED



Colour: 00003
Colour description: BLACK



Colour: 00004
Colour description: ROYAL

CLASSIC CARRÉ
ARCHIVIO N.58 COQUELICOT PARFUMÉ

90x90 - 100% SILK CRÊPE DE CHINE | 14 MM - DEMI AJOUR-HEM
 Model: 0489F - Article: 0023G - Style: 43362

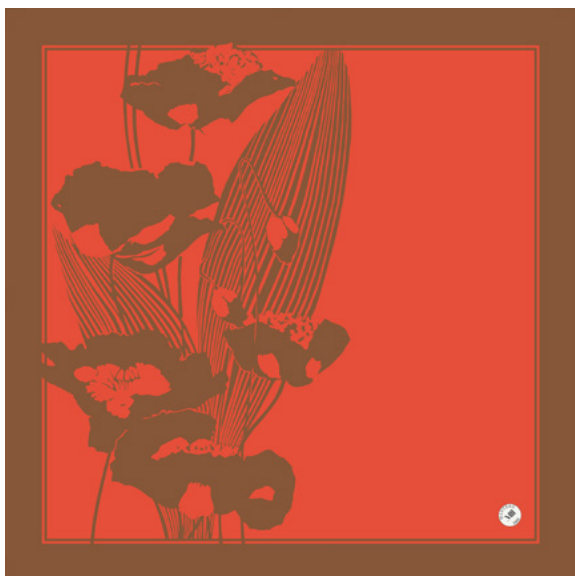
This graphic design of a poppy portrays an original creation of the Mantero Collection. Essential but striking, the poppy stands out elegantly against the neutral background, emphasizing the beauty of its simplicity also thanks to the silk crêpe.



Colour: 00001
 Colour description: CREAM



Colour: 00002
 Colour description: NAVY



Colour: 00003
 Colour description: BROWN



Colour: 00004
 Colour description: BLACK

CLASSIC CARRÉ
ARCHIVIO N.59 FLOWERS GRAND SLAM

90x90 - 100% SILK TWILL | 14 MM - HAND-ROLLED HEM
 Model: 0156F - Article: 0030G - Style: 43349

Cyclamen, carnations, hyacinths, dandelions and other wildflowers intertwine in a lively and colourful dance, creating an explosion of botanical beauty. An icon of the Mantero 1902 collection.



Colour: 00001
 Colour description: CREAM



Colour: 00002
 Colour description: BLUE



Colour: 00003
 Colour description: BLACK



Colour: 00004
 Colour description: APRICOT

CLASSIC CARRÉ

MANTERO 1902 TENNIS CLUB

90x90 - 100% SILK TWILL | 14 MM - HAND-ROLLED HEM
 Model: 0156F - Article: 0030G - Style: 43482

Welcome to the Mantero 1902 Tennis Club! A sunlit tennis court becomes the heart of a relaxing, holiday atmosphere. Elegant flowers adorning the landscape add a touch of beauty, turning every match into an unforgettable experience.



Colour: 00001
 Colour description: RED



Colour: 00002
 Colour description: APRICOT



Colour: 00003
 Colour description: GREEN



Colour: 00004
 Colour description: LIGHT BLUE

CLASSIC CARRÉ LA PALMERAIE

90x90 - 100% SILK TWILL - HEAVY | 20 MM - HAND-ROLLED HEM
Model: 0156F - Article: 0057G - Style: 44358

In the evocative atmosphere of La Palmeraie, exotic plants and flowers come to life, ready to flood the backdrop of lush greenery. The print inspired by an archive drawing from the 1990s brings a touch of nostalgia and retro charm to this twill classic carré.



Colour: 00001
Colour description: KAKI



Colour: 00002
Colour description: RED



Colour: 00003
Colour description: FUCHSIA



Colour: 00004
Colour description: RED/BURGUNDY

GRAND CARRÉ WIMBLEDON

LOZENGE-SHAPED SCARF - 69x200

100% SILK CRÊPE DE CHINE | 14 MM - HAND-ROLLED HEM

Model: 0645F - Article: 0023G - Style: 44160

The product is delivered rolled up to maintain the wrinkled effect.

A distinctive lozenge-shaped scarf enriched with a unique pattern and wrinkled effect that captures the dynamic essence of the tennis game through geometric designs. This particular pattern, an explicit homage to Wimbledon, stands out for its elegance and originality.



Colour: 00001
Colour description: RED



Colour: 00002
Colour description: MEDIUM BROWN



Colour: 00003
Colour description: LIGHT BLUE

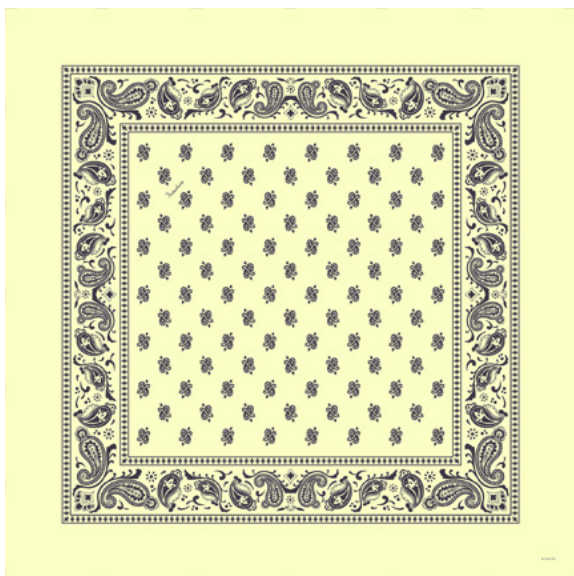


Colour: 00004
Colour description: NAVY

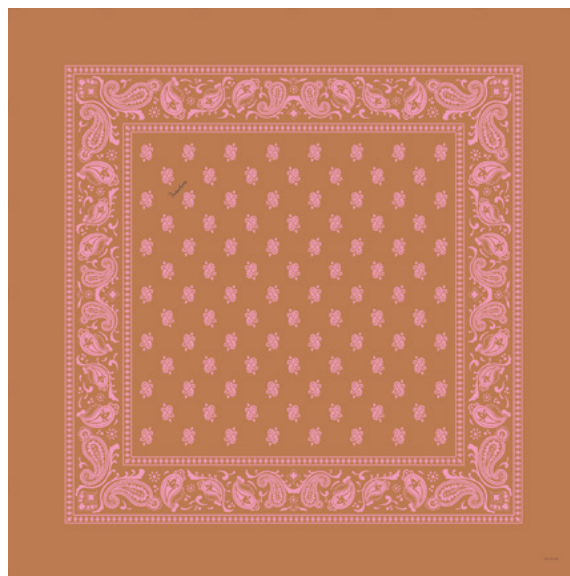
GRAND CARRÉ EXOTIC PAISLEY

140x140 - 100% BABY SHEEP WOOL - HAND-MADE BABY FRINGES
Model: 0491F - Article: 23475 - Style: 38932

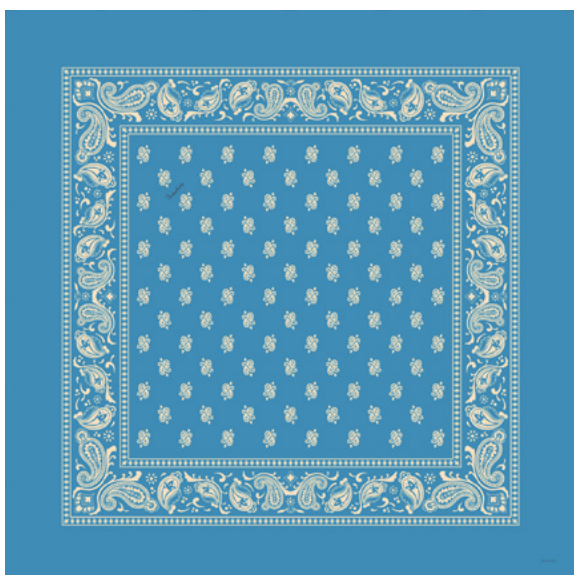
A lightweight wool scarf with hand-fringed edges, embellished with a vivid paisley pattern that enchants with its decorative elements of sinuous curves and tangled details, gracefully enclosed in a frame.



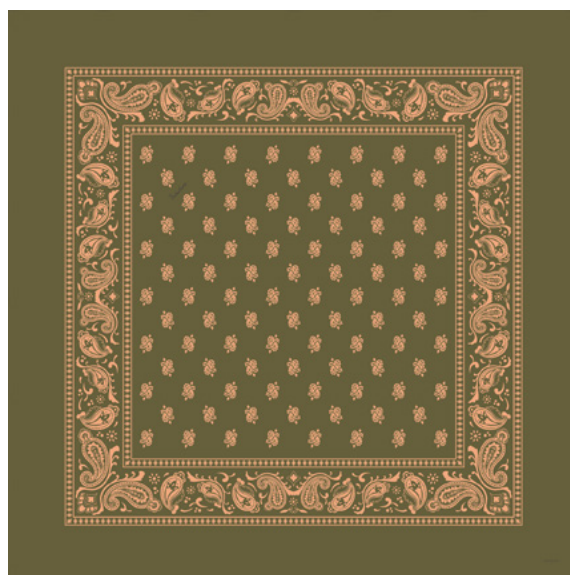
Colour: 00001
Colour description: YELLOW



Colour: 00002
Colour description: MEDIUM BROWN



Colour: 00003
Colour description: BLUE



Colour: 00004
Colour description: GREEN

GRAND CARRÉ LA MAMOUNIA

135x200 - 100% SILK HABOTAI | 8 MM - HAND-MADE BABY FRINGES
Model: 0652F - Article: 06301 - Style: 44184

A fresh silk habotai stole, hand-fringed, that stands out for its majesty, where exotic plants and flowers come alive in a tableau full of vibrant colour and life.



Colour: 00001
Colour description: ORANGE



Colour: 00002
Colour description: CORAL RED



Colour: 00003
Colour description: RED/BURGUNDY



Colour: 00004
Colour description: BEIGE

ACCESSORIES
MAROCAINE

LOZENGE-SHAPED SCARF - 27x135
100% SILK HABOTAI | 8 MM - HAND-ROLLED HEM
Model: 0644F - Article: 06301 - Style: 44101

The product is delivered rolled up to maintain the wrinkled effect.

A habotai lozenge-shaped scarf with a wrinkled effect and motifs evoking oriental rugs: light and soft, ideal to complete the look with a touch of sophistication.



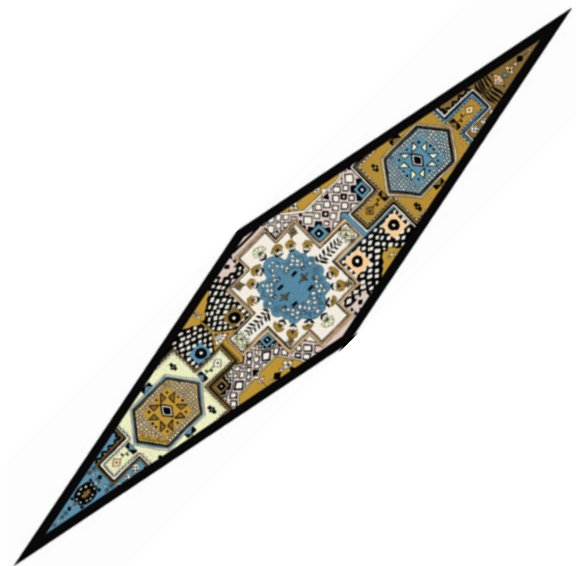
Colour: 00001
Colour description: YELLOW



Colour: 00002
Colour description: LIGHT BLUE



Colour: 00003
Colour description: RED/BURGUNDY



Colour: 00004
Colour description: DIJON

ACCESSORIES

FLORA MEDITERRANEA

BANDEAU - 5/2x179

100% SILK TWILL | 14 MM

Model: 0638F - Article: 0014G - Style: 44009

Two sides, two different worlds, two distinctive styles. A very original all-purpose silk twill bandeau to wear on different occasions: a tennis match or an elegant country lunch?



Colour: 00001
Colour description: IVORY



Colour: 00002
Colour description: TURQUOISE



Colour: 00003
Colour description: NAVY



Colour: 00004
Colour description: BLACK

ACCESSORIES

BOTEH TROIS COTES

BANDANA TRIANGLE - 68x68x96

100% SILK CRÊPE DE CHINE | 14 MM - FLAT-MACHINE HEM WITH APPLIED FRINGES

Model: 0643F - Article: 0023G - Style: 43997

Bandana triangle with a charming macro boteh pattern and embellished with fringes on the sides. An accessory that combines the elegance of classic design with the vivacity of contemporary fashion.



Colour: 00001
Colour description: MOUSTARD



Colour: 00002
Colour description: RED



Colour: 00003
Colour description: TURQUOISE



Colour: 00004
Colour description: VIOLET

ACCESSORIES

MUGUET

BANDEAU - 16x130

100% SILK CRÊPE DE CHINE | 14 MM - DEMI AJOUR-HEM AND EMBROIDERY

Model: 0642F - Article: 0023G - Style: 43948

Elegant XL bandeau with sharp sides, made of silk crêpe. The essential lines of the graphic pattern are enhanced by fine cut-out effect floral embroidery. Unique and exquisite, perfect to wear as a tie-like, as a belt, or softly knotted in the hair.



Colour: 00001
Colour description: ORANGE



Colour: 00002
Colour description: LIGHT BLUE



Colour: 00003
Colour description: GREEN



Colour: 00004
Colour description: YELLOW

SPECIAL ACCESSORIES

ERITA

TOP - HAND-ROLLED HEM WITH APPLIED TASSELS

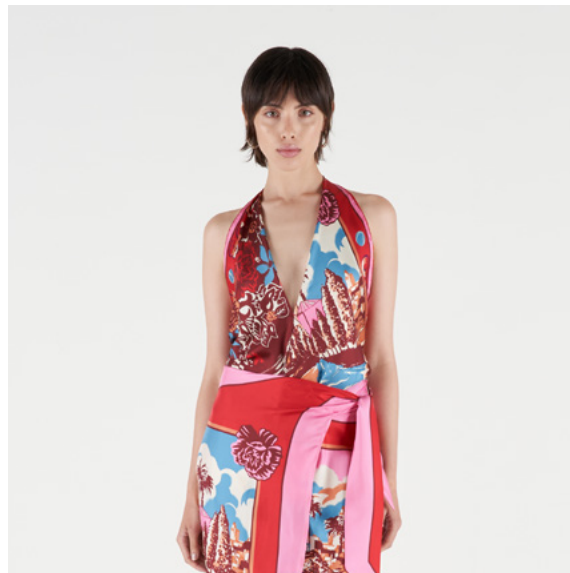
100% SILK TWILL | 14 MM

Model: 0622F - Article: 0030G - Style: 00845 *ONE SIZE

The Mantero 1902 top has all the charm of a knotted scarf, offering a versatile and fun garment embellished with laces and tassels that make it easy to wear. The real game is in how you will match it each time: one garment, a thousand possibilities. The hand-finished hem, placed print, and silk twill fabric emphasize the underlying idea, that of a carré with a Mantero 1902 archive print.



Colour: 00001
Colour description: ORANGE



Colour: 00002
Colour description: RED



Colour: 00003
Colour description: YELLOW

SPECIAL ACCESSORIES

ERITA

TOP - HAND-ROLLED HEM WITH APPLIED TASSELS

100% SILK CRÊPE SATIN JACQUARD

Model: 0622F - Article: 0226G - Style: 00839 *ONE SIZE

The Mantero 1902 top has all the charm of a knotted scarf, made even more elegant by the crêpe satin jacquard, which creates a sophisticated play of textures depicting flowers. It is enriched with laces and tassels that make it easy to wear.



Colour: 00001

Colour description: OLIVE

SPECIAL ACCESSORIES

DOROTHY

PAREO SKIRT - FLAT-MACHINE HEM

100% SILK TWILL | 14 MM

Model: 0186F - Article: 0014G - Style: 00840 *ONE SIZE

The Mantero 1902 pareo resembles a knotted scarf at the waist but with a more structured construction, offering versatility and fun. Made of silk twill and embellished with a vintage print from the original Mantero 1902 archives, this pareo embodies elegance and originality.



Colour: 00001
Colour description: ORANGE



Colour: 00002
Colour description: RED



Colour: 00003
Colour description: YELLOW

SPECIAL ACCESSORIES

DOROTHY

PAREO SKIRT - FLAT-MACHINE HEM WITH APPLIED FRINGES IN LUREX
100% SILK CRÊPE SATIN JACQUARD

Model: 0630F - Article: 0226G - Style: 00841 *ONE SIZE

The Mantero 1902 pareo resembles a knotted scarf at the waist but with a more structured construction, offering versatility and fun. Made of crêpe satin jacquard, it features a sophisticated play of textures depicting flowers and is embellished with silk lurex fringes for an even more elegant effect.



Colour: 00001

Colour description: OLIVE

COLOUR PALETTE



*loungewear everywhere



*tennis club



*modern nomad

FABRICS

SILK TWILL - certified fabric

- * Mantero DNA timeless classic
- * matt and peachskin feel
- * daily use

SILK CRÊPE - certified fabric

- * light and heavy version
- * matt effect
- * daily use

SILK HABOTAI

- * light version
- * peachskin feel
- * all day long

SILK CRÊPE SATIN JACQUARD - certified fabric

- * Mantero jacquard fabric
- * matt and shine
- * occasional use

SILK PÉKIN LUREX

- * striped fabric
- * satin chiffon and lurex
- * light and transparent

KNITWEAR

jacquard cotton

- * textured fabric
- * daily use

PRINTS



LOUNGEWEAR EVERYWHERE

Floral prints inspired by archive designs from the 1940s reimagined with a contemporary twist, a poppy pattern that emphasizes the graphic look, and a triumph of petunias in all their splendor. Wrapping and soothing tones such as blush pink, cobalt blue, and yellow combine for an ultra-chic effect enhanced by the timeless black and white combination.





TENNIS CLUB

Game, set, match. The perfect sporty luxury feel with floral and figurative prints revisited with a design edge, featuring hints of typical court tones: red clay, grass, creamy, and bright, summery colours. Welcome to the Mantero 1902 Tennis Club!

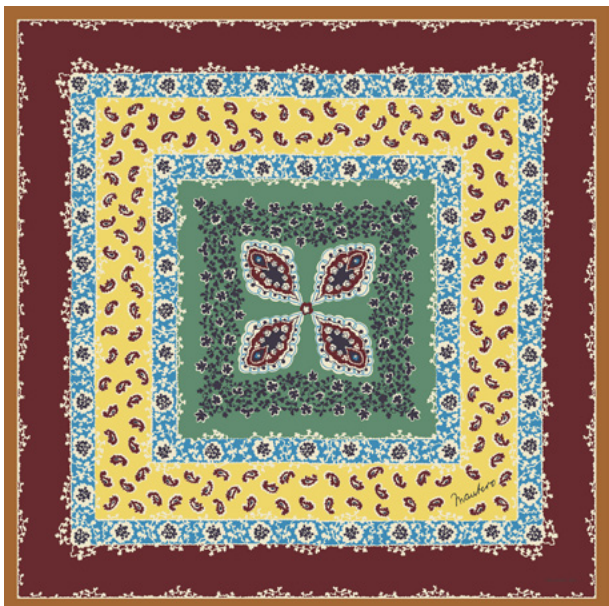
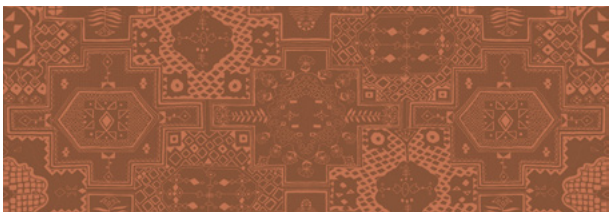


PRINTS



MODERN NOMAD

Suggestions of a journey merge with memories evoked by exotic prints such as boteh, marocain and mosaic patterns. The colours echo the earth and nature transporting the soul to remote lands. The most unexpected pairing is the one with a fine and classic toile de jوى design offered in two bicolour variants.



READY TO WEAR

CORA

SHORT SLEEVED SHIRT

SIZE: 38 - 40 - 42 - 44 - 46

* SAMPLE SIZE IT 40

Short sleeve shirt with fixed turn-up cuffs. Bowling collar and central buttoning. Flat yoke at the back with side pleats. Covered buttons in plain colour silk jacquard. Regular fit.



0830C



Model: 0125A
 Article: 27983
 Style: 0830C
 100% SILK TWILL | 14 MM
 BUTTONS COVERED IN SILK CRÊPE SATIN
 JACQUARD
 Colour: 001 - Colour description: ECRU



Model: 0125A
 Article: 27983
 Style: 0832C
 100% SILK TWILL | 14 MM
 BUTTONS COVERED IN SILK CRÊPE SATIN
 JACQUARD
 Colour: 001 - Colour description: RED



Model: 0125A
 Article: 27989
 Style: 0831C
 100% SILK CRÊPE DE CHINE - HEAVY | 16 MM
 BUTTONS COVERED IN SILK CRÊPE SATIN
 JACQUARD
 Colour: 001 - Colour description: PINK



Model: 0125A
 Article: 27989
 Style: 0833C
 100% SILK CRÊPE DE CHINE - HEAVY | 16 MM
 BUTTONS COVERED IN SILK CRÊPE SATIN
 JACQUARD
 Colour: 001 - Colour description: GREEN

READY TO WEAR

IDA

CROPPED SHIRT

SIZE: 38 - 40 - 42 - 44 - 46

* SAMPLE SIZE IT 40

Cropped shirt without collar, hidden button closure, and drawstring at the hem. Wide and soft sleeves closed by a contrasting bias, button, and keyhole. Yoke at the back with pleat. Regular fit.

LAST SEASON FW24
CARRY OVER, ONLY
CATALOGUE OPENING,
NO SAMPLE.





Model: 0075A
 Article: 27989
 Style: 0830F
 100% SILK CRÊPE DE CHINE - HEAVY | 16 MM
 BUTTONS COVERED IN SILK CRÊPE SATIN
 JAQUARD
 Colour: 001 - Colour description: BLUE



Model: 0075A
 Article: 27989
 Style: 0831F
 100% SILK CRÊPE DE CHINE - HEAVY | 16 MM
 BUTTONS COVERED IN SILK CRÊPE SATIN
 JAQUARD
 Colour: 001 - Colour description: GREEN

WHLS PRICE: € 165

READY TO WEAR

HALEY

LOOSE SHIRT

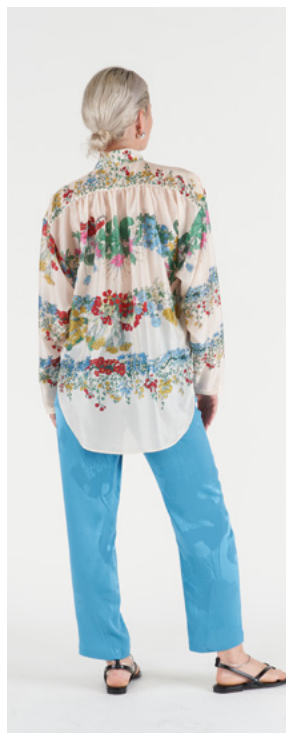
SIZE: 38 - 40 - 42 - 44 - 46

* SAMPLE SIZE IT 40

Loose and asymmetric shirt with a small gathered yoke at the back, applied pocket, and high mandarin collar. Branded mother-of-pearl effect buttons. Oversized fit.



0832H



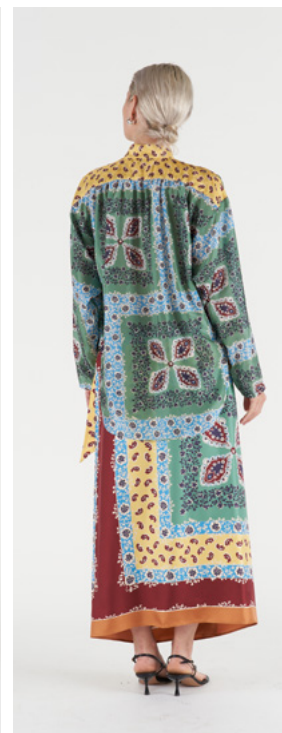
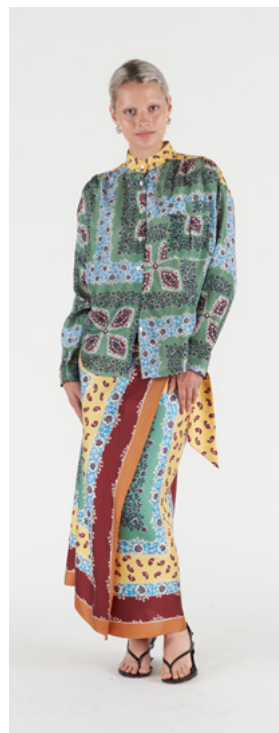
Model: 0111A
 Article: 06301
 Style: 0830H
 100% SILK HABOTAI | 8 MM
 Colour: 001 - Colour description: ECRU



Model: 0112A
 Article: 06301
 Style: 0831H
 100% SILK HABOTAI | 8 MM
 Colour: 001 - Colour description: BLACK



Model: 0112A
 Article: 06301
 Style: 0832H
 100% SILK HABOTAI | 8 MM
 Colour: 001 - Colour description: PINK



Model: 0112A
 Article: 06301
 Style: 0833H
 100% SILK HABOTAI | 8 MM
 Colour: 001 - Colour description: GREEN

*THE BACKGROUND COLOUR PRINT IS NOT LIGHT PINK BUT CREAM, LIKE THE OTHER GARMENTS IN THE SAME PRINT. THE PRINT IS ORIENTED IN THE OPPOSITE DIRECTION AND WILL BE CORRECTED IN PRODUCTION.

WHLS PRICE: € 165

READY TO WEAR
BONNIE

VERSATILE SHIRT

SIZE: 38 - 40 - 42 - 44 - 46

* SAMPLE SIZE IT 40

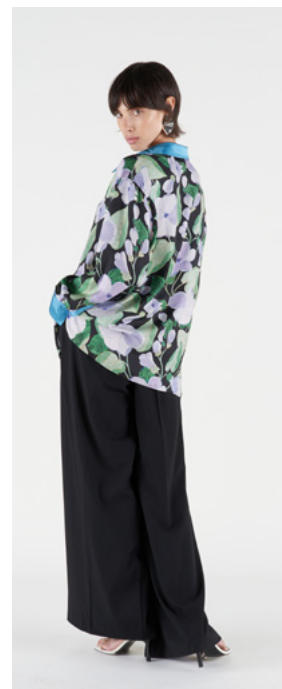
Classic shirt with a soft fit, covered button closure with branded mother-of-pearl effect buttons. Covered buttons on the cuffs, collar, and side. Possibility to button the shirt laterally for a cross-wear effect.



0830W



Model: 0063A
 Article: 0226G
 Style: 0830W
 100% SILK CRÊPE SATIN JACQUARD -
 BUTTONS COVERED IN SILK CRÊPE SATIN
 JACQUARD
 Colour: 001 - Colour description: BLUE



Model: 0063A
 Article: 27983
 Style: 0831W
 100% SILK TWILL | 14 MM
 COLLAR AND CUFFS IN SILK CRÊPE SATIN
 JACQUARD - BUTTONS COVERED IN SILK
 CRÊPE SATIN JACQUARD
 Colour: 001 - Colour description: BLACK



Model: 0126A
 Article: 27983
 Style: 0832W
 100% SILK TWILL | 14 MM
 BUTTONS COVERED IN SILK CRÊPE SATIN
 JACQUARD
 Colour: 001 - Colour description: YELLOW



Model: 0054A
 Article: 27983
 Style: 0833W
 100% SILK TWILL | 14 MM
 COLLAR AND CUFFS IN SILK CRÊPE SATIN
 JACQUARD - BUTTONS COVERED IN SILK
 CRÊPE SATIN JACQUARD
 Colour: 001 - Colour description: BLUE

SILK CRÊPE SATIN JACQUARD WHLS PRICE: € 185
 SILK TWILL WHLS PRICE: € 175

READY TO WEAR

LOLITA

DRAWSTRING BLOUSE

SIZE: 38 - 40 - 42 - 44 - 46

* SAMPLE SIZE IT 40

Loose blouse with raglan sleeves and open neckline with ties and tassels for closure. Three-quarter sleeves with very low cuffs allowing for puff. Soft fit.



0830E



Model: 0109A
Article: 06301
Style: 0830E
100% SILK HABOTAI | 8 MM
Colour: 001 - Colour description: BLACK

Model: 0109A
Article: 06301
Style: 0832E
100% SILK HABOTAI | 8 MM
Colour: 001 - Colour description: YELLOW

ONLY CATALOGUE
PRINT, NO SAMPLE



Model: 0110A
Article: 06301
Style: 0834E
100% SILK HABOTAI | 8 MM
Colour: 001 - Colour description: PINK

*THE DRAWSTRING WILL BE LIKE IN THE YELLOW PRINT, NOT PINK.

WHLS PRICE: € 165

READY TO WEAR

LOLITA

DRAWSTRING BLOUSE

SIZE: 38 - 40 - 42 - 44 - 46

* SAMPLE SIZE IT 40

Loose blouse with raglan sleeves and open neckline with ties and tassels for closure. Three-quarter sleeves with very low cuffs allowing for puff. Soft fit.



0833E



Model: 0110A
Article: 24764
Style: 0831E
100% SILK PÉKIN LUREX
(97% SILK 3% POLYESTER)
Colour: 001 - Colour description: BLACK



Model: 0110A
Article: 24764
Style: 0833E
100% SILK PÉKIN LUREX
(97% SILK 3% POLYESTER)
Colour: 001 - Colour description: BLUE

READY TO WEAR

VICTORIA

KNIT POLO SHIRT

SIZE: 38 - 40 - 42 - 44 - 46

* SAMPLE SIZE IT 40

Short sleeve v-neck polo shirt. Embossed jacquard design. Slim fit.



00838 002



Model: 0139A
Article: OPOLO
Style: 00838
80% COTTON 20% POLYAMIDE
Colour: 001 - Colour description: BROWN



Model: 0139A
Article: OPOLO
Style: 00838
80% COTTON 20% POLYAMIDE
Colour: 002 - Colour description: ECRU

READY TO WEAR

MARINA

KNIT MINI SKIRT

SIZE: 38 - 40 - 42 - 44 - 46

* SAMPLE SIZE IT 40

Knit miniskirt with a-line shape and zipper at side. Embossed jacquard design. Slim fit.



00837 001



Model: 0141A
Article: 0GONN
Style: 00837
80% COTTON 20% POLYAMIDE
Colour: 001 - Colour description: BROWN



Model: 0141A
Article: 0GONN
Style: 00837
80% COTTON 20% POLYAMIDE
Colour: 002 - Colour description: ECRU

READY TO WEAR

CLAUDE

KNIT CARDIGAN

SIZE: 38 - 40 - 42 - 44

* SAMPLE SIZE IT 40

4 button jacquard knit cardigan with open stitch pattern. Oversized fit.



00836 003



Model: 0140A
 Article: JACQD
 Style: 00836
 100% COTTON
 BUTTONS COVERED IN SILK CRÊPE SATIN
 JACQUARD
 Colour: 001 - Colour description: ORANGE



Model: 0140A
 Article: JACQD
 Style: 00836
 100% COTTON
 BUTTONS COVERED IN SILK CRÊPE SATIN
 JACQUARD
 Colour: 002 - Colour description: BLACK



Model: 0140A
 Article: JACQD
 Style: 00836
 100% COTTON
 BUTTONS COVERED IN SILK CRÊPE SATIN
 JACQUARD
 Colour: 003 - Colour description: GREEN

WHLS PRICE: € 175

READY TO WEAR

MARLENE

LONG DRESS

SIZE: 38 - 40 - 42 - 44 - 46

* SAMPLE SIZE IT 40

Long slip dress with v-neck at the front and back. Bias-cut skirt. Zipper at side. Regular fit.



0833L



Model: 0128A
 Article: 0226G
 Style: 0830L
 100% SILK CRÊPE SATIN JACQUARD
 Colour: 001 - Colour description: ORANGE



Model: 0128A
 Article: 06301
 Style: 0831L
 100% SILK HABOTAI | 8 MM
 Colour: 001 - Colour description: BLACK



Model: 0128A
 Article: 06301
 Style: 0832L
 100% SILK HABOTAI | 8 MM
 Colour: 001 - Colour description: BLACK



Model: 0128A
 Article: 06301
 Style: 0833L
 100% SILK HABOTAI | 8 MM
 Colour: 001 - Colour description: BLUE

*TBD CHANGE FABRIC FROM HABOTAI TO HEAVY CRÊPE DE CHINE.

SILK CRÊPE SATIN JACQUARD WHLS PRICE: € 280

SILK HABOTAI WHLS PRICE: € 259

READY TO WEAR

NADIA

RAGLAN MIDI DRESS

SIZE: 38 - 40 - 42 - 44 - 46

* SAMPLE SIZE IT 40

Asymmetric midi dress with side cuts. Bell sleeves and raglan neckline. Zipper at back. Regular fit.



0833M



Model: 0115A
 Article: 0014G
 Style: 0832M
 100% SILK TWILL | 14 MM
 Colour: 001 - Colour description: YELLOW



Model: 0116A
 Article: 0014G
 Style: 0830M
 100% SILK TWILL | 14 MM
 Colour: 001 - Colour description: ECRU



Model: 0116A
 Article: 0014G
 Style: 0831M
 100% SILK TWILL | 14 MM
 Colour: 001 - Colour description: BLACK



Model: 0116A
 Article: 0226G
 Style: 0833M
 100% SILK CRÊPE SATIN JACQUARD
 Colour: 001 - Colour description: OLIVE

*TBD: SEE ALTERNATIVE FIGURINE OR IMPROVE PLACEMENT IN PRODUCTION.

SILK TWILL WHLS PRICE: € 265

*SILK TWILL PRINT POSITIONED ON THE GARMENT WHLS PRICE: € 289

SILK CRÊPE SATIN JACQUARD WHLS PRICE: € 289

READY TO WEAR

LOLA

DRAWSTRING DRESS

SIZE: 38 - 40 - 42 - 44 - 46

* SAMPLE SIZE IT 40

Loose midi kaftan dress adjustable at the waist with a sash. Open neckline with ties and applied tassels. Three-quarter raglan sleeves with low cuffs allowing for puff. Soft fit.



0833K



Model: 0113A
 Article: 06301
 Style: 0830K
 100% SILK HABOTAI | 8 MM
 Colour: 001 - Colour description: RED



Model: 0113A
 Article: 06301
 Style: 0831K
 100% SILK HABOTAI | 8 MM
 Colour: 001 - Colour description: PINK



Model: 0114A
 Article: 24764
 Style: 0832K
 100% SILK PÉKIN LUREX
 (97% SILK 3% POLYESTER)
 Colour: 001 - Colour description: RUST



Model: 0114A
 Article: 24764
 Style: 0833K
 100% SILK PÉKIN LUREX
 (97% SILK 3% POLYESTER)
 Colour: 001 - Colour description: GREEN

SILK HABOTAI WHLS PRICE: € 275
 SILK PÉKIN LUREX WHLS PRICE: € 299

READY TO WEAR

MARILYN

CHEMISIER

SIZE: 38 - 40 - 42 - 44 - 46

* SAMPLE SIZE IT 40

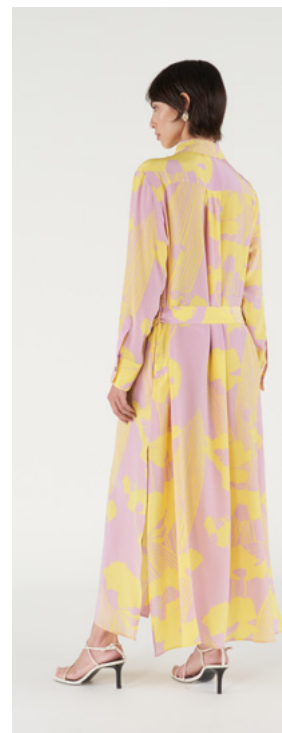
Shirt dress without a waist seam, with side slits and belt loops. Classic collar and cuffs, covered buttons in plain colour silk jacquard. Soft fit.



0834A



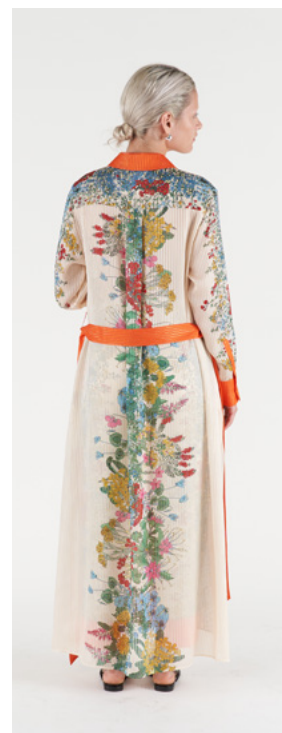
Model: 0123A
 Article: 27989
 Style: 0830A
 100% SILK CRÊPE DE CHINE - HEAVY | 16 MM
 BUTTONS COVERED IN SILK CRÊPE SATIN
 JACQUARD
 Colour: 001 - Colour description: ECRU



Model: 0123A
 Article: 27989
 Style: 0831A
 100% SILK CRÊPE DE CHINE - HEAVY | 16 MM
 BUTTONS COVERED IN SILK CRÊPE SATIN
 JACQUARD
 Colour: 001 - Colour description: PINK



Model: 0123A
 Article: 27989
 Style: 0832A
 100% SILK CRÊPE DE CHINE - HEAVY | 16 MM
 BUTTONS COVERED IN SILK CRÊPE SATIN
 JACQUARD
 Colour: 001 - Colour description: BLUE



Model: 0123A
 Article: 27990
 Style: 0834A
 100% SILK PÉKIN LUREX (97% SILK 3%
 POLYESTER) - BUTTONS COVERED IN SILK
 CRÊPE SATIN JACQUARD
 Colour: 001 - Colour description: ECRU

SILK CRÊPE DE CHINE WHLS PRICE: € 280
 SILK PÉKIN LUREX WHLS PRICE: € 310

READY TO WEAR

MARILYN

CHEMISIER

SIZE: 38 - 40 - 42 - 44 - 46

* SAMPLE SIZE IT 40

Shirt dress without a waist seam, with side slits and belt loops. Classic collar and cuffs, covered buttons in plain colour silk jacquard. Soft fit.



0833A



Model: 0124A

Article: 27983

Style: 0833A

100% SILK CRÊPE SATIN JACQUARD

COLLAR AND CUFFS: 100% SILK TWILL

BUTTONS COVERED IN SILK CRÊPE SATIN

Colour: 001 - Colour description: BLUE

READY TO WEAR
MARGHE

FIVE POCKETS WIDE LEG JEANS
SIZE: 38 - 40 - 42 - 44 - 46
* SAMPLE SIZE IT 40

Printed stone-washed jeans with five pockets, wide legs, waistband, rivets, and snap button. Regular fit.



00850 001



Model: 0084A
Article: JEANS
Style: 00850
100% COTTON
Colour: 001 - Colour description: BLACK



Model: 0084A
Article: JEANS
Style: 00850
100% COTTON
Colour: 002 - Colour description: BLUE

READY TO WEAR
MICHELA

A LINE SKIRT

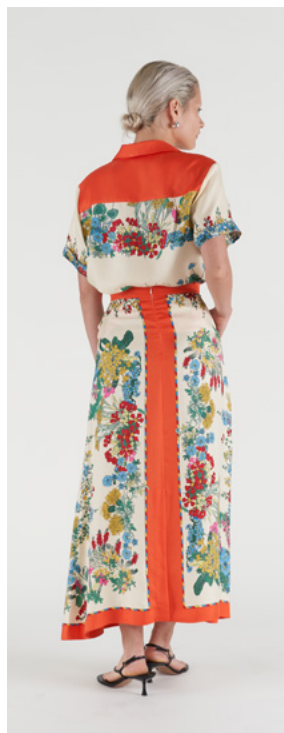
SIZE: 38 - 40 - 42 - 44 - 46

*SAMPLE SIZE IT 40

A-line skirt with waistband and back slit. Front slash pockets. Regular fit.



0833G



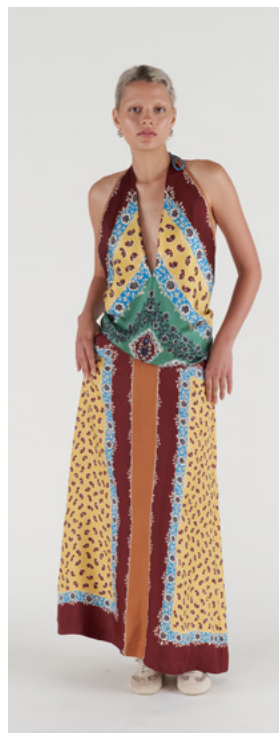
Model: 0120A
 Article: 0014G
 Style: 0830G
 100% SILK TWILL | 14 MM
 Colour: 001 - Colour description: ECRU



Model: 0120A
 Article: 0014G
 Style: 0831G
 100% SILK TWILL | 14 MM
 Colour: 001 - Colour description: BLACK



Model: 0120A
 Article: 0014G
 Style: 0832G
 100% SILK TWILL | 14 MM
 Colour: 001 - Colour description: YELLOW



Model: 0120A
 Article: 0014G
 Style: 0833G
 100% SILK TWILL | 14 MM
 Colour: 001 - Colour description: YELLOW

READY TO WEAR

MICHELA

A LINE SKIRT

SIZE: 38 - 40 - 42 - 44 - 46

* SAMPLE SIZE IT 40

A-line skirt with waistband and back slit. Front slash pockets. Regular fit.



0834G

ONLY CATALOGUE PRINT, NO SAMPLE



Model: 0120A
Article: 0014G
Style: 0835G
100% SILK TWILL | 14 MM
Colour: 001 - Colour description: PINK



Model: 0120A
Article: 0226G
Style: 0834G
100% SILK CRÊPE SATIN JACQUARD
Colour: 001 - Colour description: ORANGE

SILK TWILL WHLS PRICE: € 185
SILK CRÊPE SATIN JACQUARD WHLS PRICE: € 200

READY TO WEAR

DORIS

STRAIGHT PANTS

SIZE: 38 - 40 - 42 - 44 - 46

* SAMPLE SIZE IT 40

Cropped pants with a slim leg. Waistband with elastic insert. Regular fit.



0832D



Model: 0119A
 Article: 0014G
 Style: 0830D
 100% SILK TWILL | 14 MM
 Colour: 001 - Colour description: ECRU



Model: 0119A
 Article: 0014G
 Style: 0831D
 100% SILK TWILL | 14 MM
 Colour: 001 - Colour description: RED



Model: 0119A
 Article: 0014G
 Style: 0832D
 100% SILK TWILL | 14 MM
 Colour: 001 - Colour description: BLUE



Model: 0119A
 Article: 0014G
 Style: 0833D
 100% SILK TWILL | 14 MM
 Colour: 001 - Colour description: RUST

READY TO WEAR

DORIS

STRAIGHT PANTS

SIZE: 38 - 40 - 42 - 44 - 46

* SAMPLE SIZE IT 40

Cropped pants with a slim leg. Waistband with elastic insert. Regular fit.



0834D



Model: 0119A
Article: 0226G
Style: 0834D
100% SILK CRÊPE SATIN JACQUARD
Colour: 001 - Colour description: BLUE



ONLY CATALOGUE PRINT, NO SAMPLE



Model: 0119A
Article: 0226G
Style: 0835D
100% SILK CRÊPE SATIN JACQUARD
Colour: 001 - Colour description: ORANGE

READY TO WEAR

ALICE

WIDE LEG TROUSERS

SIZE: 38 - 40 - 42 - 44 - 46

* SAMPLE SIZE IT 40

Long pants with palazzo legs and shaped waistband. Covered button in plain colour silk jacquard.



0833P



Model: 0121A
 Article: 0226G
 Style: 0830P
 100% SILK CRÊPE SATIN JACQUARD
 BUTTONS COVERED IN SILK CRÊPE SATIN JACQUARD
 Colour: 001 - Colour description: OLIVE



Model: 0122A
 Article: 27989
 Style: 0831P
 100% SILK CRÊPE DE CHINE - HEAVY | 16 MM
 BUTTONS COVERED IN SILK CRÊPE SATIN JACQUARD
 Colour: 001 - Colour description: BLACK



Model: 0122A
 Article: 27989
 Style: 0831P
 100% SILK CRÊPE DE CHINE - HEAVY | 16 MM
 BUTTONS COVERED IN SILK CRÊPE SATIN JACQUARD
 Colour: 002 - Colour description: PINK



Model: 0122A
 Article: 27989
 Style: 0833P
 100% SILK CRÊPE DE CHINE - HEAVY | 16 MM
 BUTTONS COVERED IN SILK CRÊPE SATIN JACQUARD
 Colour: 001 - Colour description: BLUE

SILK CRÊPE SATIN WHLS PRICE: € 210
 SILK CRÊPE DE CHINE WHLS PRICE: € 195

READY TO WEAR

ISABELLA

DOUBLE-BREASTED BLAZER

SIZE: 38 - 40 - 42 - 44 - 46

* SAMPLE SIZE IT 40

Classic double-breasted blazer with lapels and flap welt pockets. Back vent. Fully lined garment. Covered buttons in solid colour silk jacquard. Regular fit.



0830B



Model: 0117A
 Article: 27982
 Style: 0831B
 100% SILK CRÊPE DE CHINE - HEAVY | 16 MM
 BUTTONS COVERED IN SILK CRÊPE SATIN
 JACQUARD
 Colour: 001 - Colour description: BLACK



Model: 0117A
 Article: 27983
 Style: 0830B
 100% SILK CRÊPE SATIN JACQUARD
 BUTTONS COVERED IN SILK CRÊPE SATIN
 JACQUARD
 Colour: 001 - Colour description: OLIVE



Model: 0117A
 Article: 27989
 Style: 0832B
 100% SILK CRÊPE DE CHINE - HEAVY | 16 MM
 BUTTONS COVERED IN SILK CRÊPE SATIN
 JACQUARD
 Colour: 002 - Colour description: PINK



Model: 0118A
 Article: 27989
 Style: 0833B
 100% SILK CRÊPE DE CHINE - HEAVY | 16 MM
 BUTTONS COVERED IN SILK CRÊPE SATIN
 JACQUARD
 Colour: 001 - Colour description: BLUE

SILK CRÊPE SATIN WHLS PRICE: € 325
 SILK CRÊPE DE CHINE WHLS PRICE: € 299

READY TO WEAR

ARIELE

LIGHTWEIGHT BOMBER JACKET

SIZE: 38 - 40 - 42 - 44 - 46

* SAMPLE SIZE IT 40

Lightweight bomber jacket with drawstring at the hem, elasticated cuffs. Soft fit.



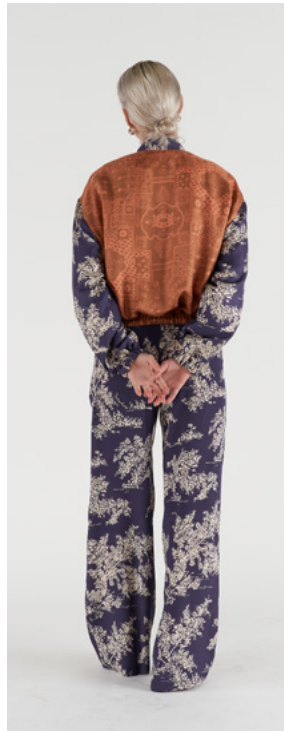
0830Z



Model: 0127A
Article: 27983
Style: 0830Z
100% SILK TWILL | 14 MM
Colour: 001 - Colour description: RED



Model: 0129A
Article: 27983
Style: 0831Z
100% SILK TWILL | 14 MM
Colour: 001 - Colour description: YELLOW



Model: 0129A
Article: 27983
Style: 0832Z
100% SILK TWILL | 14 MM
Colour: 001 - Colour description: RUST

READY TO WEAR
PATTI

DUSTER COAT

SIZE: 40 - 42 - 44

* SAMPLE SIZE IT 40

Duster coat with three-quarter sleeves, storm flap, and hidden button closure. Soft fit.

LAST SEASON SS24
CARRY OVER, ONLY
CATALOGUE OPENING,
NO SAMPLE.





Model: 0137A
 Article: 0226G
 Style: 0830S
 100% SILK CRÊPE SATIN JACQUARD
 Colour: 001 - Colour description: ORANGE



Model: 0138A
 Article: 27982
 Style: 0831S
 100% SILK CRÊPE DE CHINE - HEAVY | 16 MM
 Colour: 001 - Colour description: BLACK

SILK CRÊPE SATIN JACQUARD WHLS PRICE: € 350
 SILK CRÊPE DE CHINE WHLS PRICE: € 319

PACKAGING / NEW PRINTS



ASSORTED HANG-TAG



ENVELOPE FOR SMALL FORMATS
mm 180x360 with flap mm 80



ASSORTED BOX FOR ACCESSORIES
mm 250x250x30



ENVELOPE FOR CLOTHING
mm 350x480 with flap mm 120

MANTERO | 1902

mantero.com

