



Le Sarte Pettegole

FALL | WINTER 2023



GIM W3K RL2



OL3 W3B UB1



OL9 W2E



OL3 W2F UA1



YPD W2X FM1



YHM W3D FJ1



YPD W2Y FJ1

YP3 W2M UM3



YMR W2P FQ2



YX4 W2Q UH1
YP3 W2Q UM3



YTI W3E UH1



YV0 W2L UJ1
YTI WXJ UH1



YTI W2V UH2



YRT W2U FJ1



YMR W2T FJ1



YRT W3L FI2





YV0 W3J US1



YHM W2W FF1



YV0 W2Z UF1



YCZ W2E FF1



YMR W26 FF1



YHM W2B FE3



YTI W26 UE2

YV0 W26 US1



YRV W3F FE1



YRT W3P FE2



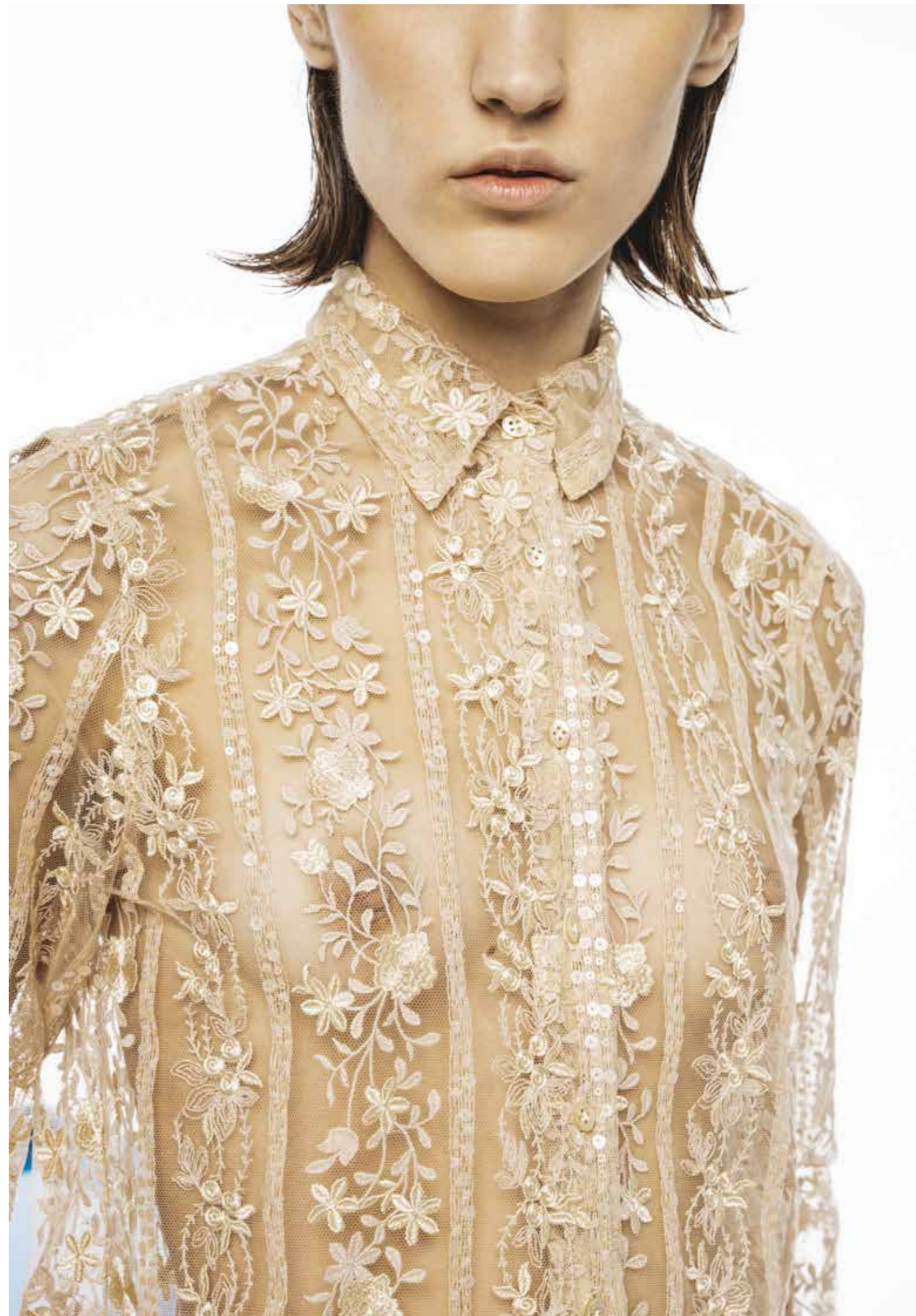
YV0 W2T US1



YHM W2M



YTO W3N FS1





YLO W2D UY1



YMX W2Y UT1



YPD W2K FT2



YPD WVU FT1





YCZ W3E RY1



FE0 W3H UA1



GIEMME BRANDSCORPORATE S.r.l.

Sede Legale: via Morimondo 2/4 Milano - 20143 | Sede Operativa: via E.Mattei, 1 Pontevico (BS) - 25026

Tel. 030 930 77 61 / Fax. 030 930 60 63

info@giemmebrandscorporate.it

SHOWROOM

Milano SHOWROOM_via Morimondo 2/4 - 20143 Milano | New York SHOWROOM

@: showroom.mi@giemmebrandscorporate.it / T: 02 813 96 33 | @: showroom.nyc@gruppomatteinc.com / T. 212.644.3895

Follow Us!

IG: [lesartepettegole_official](https://www.instagram.com/lesartepettegole_official) | FB: Le Sarte Pettegole